

QUASER

we cut faster

Horizontal M/C Cell

HX504 Cell(240ATC+8APC)

HX505 Cell(150ATC+8APC)

Cell concept

Feature

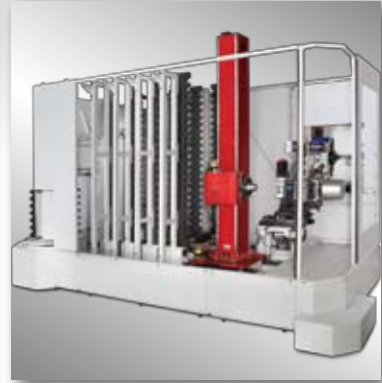
|| Tool management control system



|| 240 position tool magazine



|| 360 ~ 500 position tool magazine



|| Cell & pallet loader control system



|| APC_HELP

|| Pallet status

|| Pallet_Table

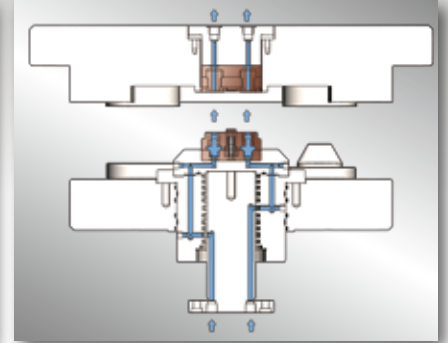
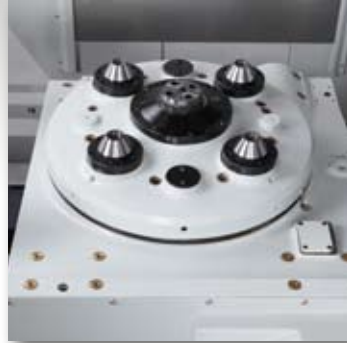


Note: The object might be different from the photos of catalogue if there is any specification update.



Basic M/C: HX504 or HX505

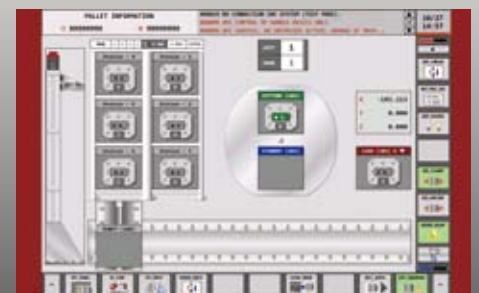
Fixture hydraulic pass through pallet (opt.)



Job management

Pallet ID chip

Pallet location Information





Available NC system:
FAUNC 31iB
SIEMENS 840D



RFID tag (opt.)



Pallet loader

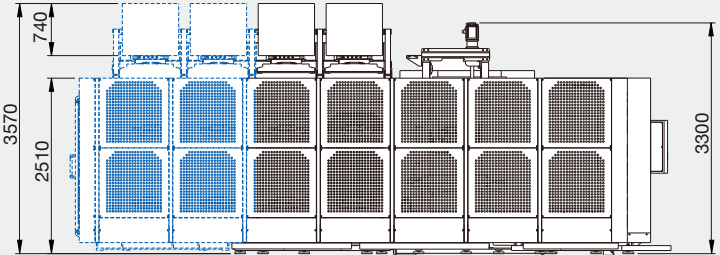
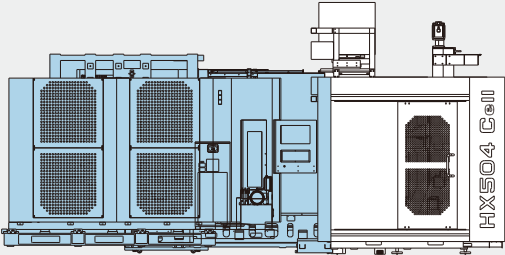
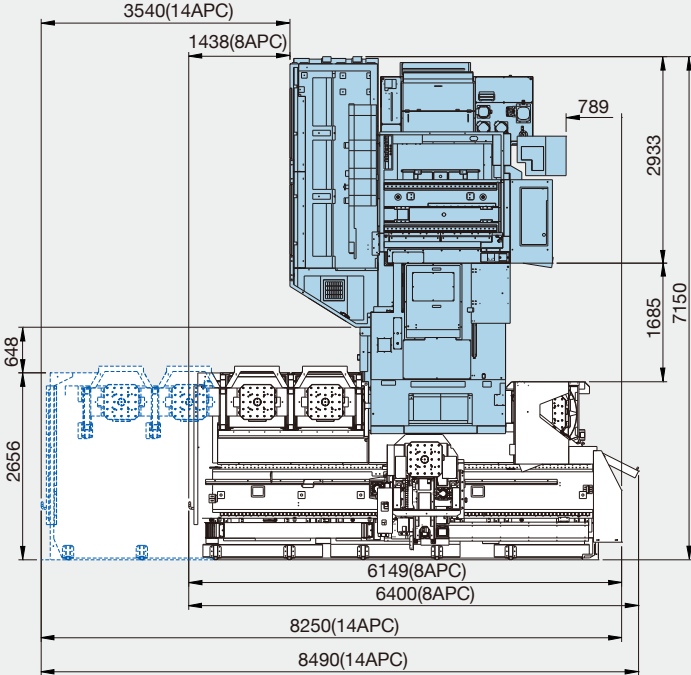


Loading station



Machine dimensions

Installation dimension



Technical Data	HX504			HX505			
	A / B			A			
Work range							
Pallet size (mm)	500 x 500						
Max. work swing diameter (mm)	Ø762			Ø800			
Max. work piece height	740			740			
Table load capacity (kg)	500			500			
Travel X / Y / Z (mm)	762 / 640 / 810			762 / 640 / 800			
B minimum indexing (degree)	1 / 0.001			1			
Table surface to spindle center (mm)	85 ~ 725 (Belt) 100 ~ 740 (Coupling)			85 ~ 725			
Spindle nose to table center (mm)	110 ~ 920			115 ~ 915			
Surface configuration	24-M16@ pitch 100 mm grid						
Feed drive							
Feed force X / Y / Z (N)	8,639 / 8,639 / 8,639 (F) 10,603 / 14,137 / 10,603 (S)			11,519 / 11,519 / 11,519 (F) 14,137 / 18,849 / 14,137 (S)			
Rapid movement X / Y / Z (m/min)	48			32			
B (sec. / 90 degree)	2.5 / 1.5			2.5			
Acceleration X / Y / Z (m/s ²)	4 / 5 / 5			3 / 4 / 4			
Dia. & pitch of the ball screw (mm)	Ø45 / 16			Ø45 / 12			
Accuracy Positioning / Repeatability							
ISO 230-2	0.008 / 0.004						
JIS 6338 (300 mm)	±0.003 / ±0.002						
VDI3441	0.008 / 0.004						
Main spindle							
Spindle taper	BBT40			BBT50			
Max. spindle speed	9,000	12,000	15,000	6,000	10,000		
Spindle base speed	F	1,125	1,500	1,400	750	500	
	S	1,500	2,000	2,000	1,000	2,000	
Spindle output kW	(S3-25%)	F	35	35	26 ⁽¹⁾	35	22 ⁽¹⁾
	(S6-25%)	S	46.5	46.5	27.7	46.5	46.5
Spindle torque Nm	(S3-25%)	F	297	223	177	446	353 ⁽²⁾
	(S6-25%)	S	296	222	132	444	222
Spindle transmission	Belt		Coupling	Belt	Coupling		
Spindle bearing diameter (mm)	Ø70			Ø100			
Tool changer							
Tool selection	Address fixed, random method						
Magazine positions	240			150			
Max. tool diameter w/o adjacent tool (mm)	Ø76.2 / Ø150			Ø110 / Ø220			
Max. tool length (mm)	450			400			
Max. tool weight (kg)	7			15			
Max. tool weight moment <from spindle gauge line> (Nm)	10			25			
Tool to tool time / Chip to chip time (sec.)	2.3 / 5.2			3.4 / 7.3			
Pallet changer							
Number of pallet	8 or 14						
Method of pallet changer / storage	swing type (internal) / Matrix type (External)						
Pallet change time (sec.)	10.5						
Pallet changing repeatability (mm)	0.01						
Coolant system							
Coolant tank capacity (Liter)	450L						
- Nozzle coolant pump capacity	75L / min, 3 bar						
- Through spindle coolant pump capacity	25L / min, 20 bar						
- Ceiling & wash down pump capacity	75L / min, 3 bar						
Machine size							
Height (mm)	3,300						
Floor space W x D (mm)	6,400 x 7,150 (8APC+240ATC)						
Weight (kg)	25,200						
Connections							
Main power	220V / 60Hz or 400V / 50Hz						
Power consumption (KVA)	55(F) 54(S)	59(F) 54(S)	54(F) 54(S)	58(F) 54(S)			

Note: ⁽¹⁾S3-60% ⁽²⁾S3-40%